	INB/SERV/0001	Issue: 2	Effective date: 15.07.2020
	<b>GC-MS TEST REPORT</b>		
	<b>Lab Ref. No: UKM-INBIO-2021-NA-0098</b>		

Sample name : 7wonder\_gritz  
Sample description : GRITZ 7 Wonders Essential Oil  
Date of sample analysed : 16/7/2021

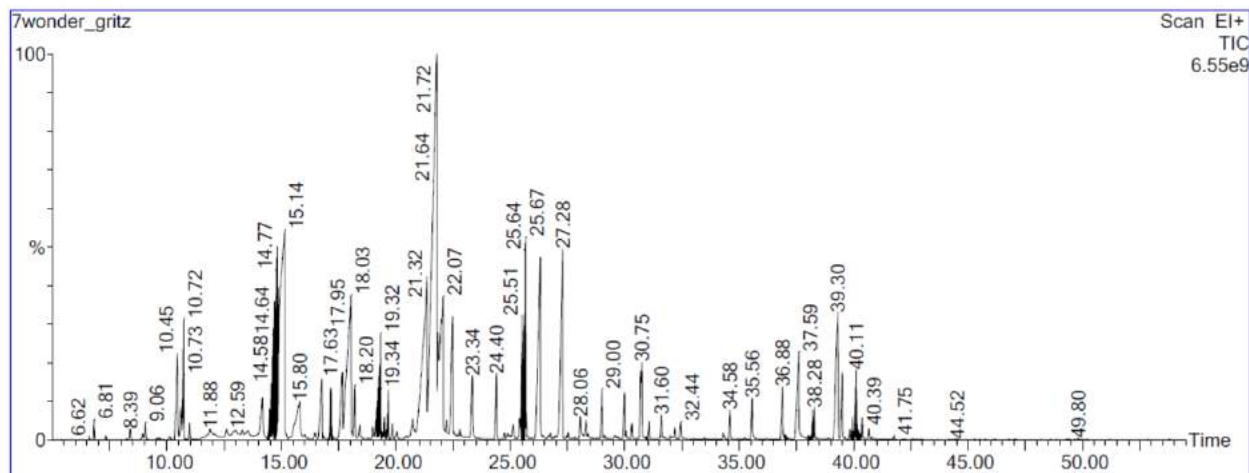




Figure 1. Representative chromatogram of 7 Wonders EO

Table 1. List of component detected in 7 Wonders EO using GC-MS

RT	Compound Name	Composition %
6.808	(-)-alpha-Pinene	0.168
8.393	L-beta-Pinene	0.128
8.944	3-Octanone	0.104
9.057	beta-Myrcene	0.204
10.103	Hexyl acetate	0.064
10.455	4-Methoxytoluene	1.535
10.613	D-Limonene	0.31
10.708	Eucalyptol	0.485
10.987	cis-beta-Ocimene	0.202
11.878	gamma-Terpinene	0.533
12.59	Linalool oxide	0.14
13.016	Dihydromyrcenol	0.284
13.284	3-Methylene-1,5,5-trimethylcyclohexene	0.11
13.529	Linalool oxide	0.211
14.171	Methyl benzoate	1.192
14.48	Linalool	0.08
14.538	Linalool	0.321
14.645	Linalool	1.052


	INB/SERV/0001	Issue: 2	Effective date: 15.07.2020
	<b>GC-MS TEST REPORT</b>		
	<b>Lab Ref. No: UKM-INBIO-2021-NA-0098</b>		

14.692	(+)-3-Carene	0.494
14.766	(+)-3-Carene	0.478
14.832	Linalool	0.316
14.861	Linalool	0.372
15.151	<b>Linalool</b>	<b>10.878</b>
15.797	Phenylethyl Alcohol	2.03
16.02	Plinol C	0.112
16.461	1,2-Dihydrolinalool	0.115
16.754	L-camphor	1.293
17.128	p-Menthan-3-one	0.092
17.657	p-Menthan-3-one	1.282
18.031	Benzyl acetate	6.1
18.2	Borneol	0.619
18.412	(-)-4-Terpineol	0.22
19.109	alpha-Terpineol	0.15
19.223	alpha-Terpineol	0.158
19.627	3-Hexen-2-one, 3,4-dimethyl-, (Z)-	0.056
19.66	3-Hexen-2-one, 3,4-dimethyl-, (Z)-	0.103
19.839	2,4,4-Trimethyl-2-pentenal	0.196
20.038	2,3,3-Trimethyl-2-(4-methylpentanoyl)-cyclopentanone	0.172
20.731	cis-Geraniol	0.396
21.362	(R)-citronellol	5.505
21.791	<b>Linalyl anthranilate</b>	<b>18.301</b>
21.846	trans-Geraniol	1.261
22.07	<b>trans-Geraniol</b>	<b>4.852</b>
22.209	1,4-Hexadiene, 3-ethyl-4,5-dimethyl-	0.126
22.481	Citronellyl formate	2.152
22.793	Lavandulyl acetate	0.075
23.343	3,7-Dimethyl-2,6-octadien-1-ol, formate	1.081
24.4	4-tert-Butylcyclohexyl acetate	0.923
24.744	Cubebene	0.066
24.887	alpha-Terpineol	0.112
25.126	Butanoic acid, 3,7-dimethyl-6-octenyl ester	0.255
25.405	Eugenol	0.302
25.478	Nerol acetate	0.196
25.507	beta-Cyanoethanol	0.217
25.621	4-tert-Butylcyclohexyl acetate	0.389
25.669	4-tert-Butylcyclohexyl acetate	0.945

	INB/SERV/0001	Issue: 2	Effective date: 15.07.2020
	<b>GC-MS TEST REPORT</b>		
	<b>Lab Ref. No: UKM-INBIO-2021-NA-0098</b>		

25.698	Copaene	0.153
26.311	<b>Nerol acetate</b>	<b>4.865</b>
26.751	alpha-Gurjenene	0.07
27.283	<b>Caryophyllene</b>	<b>4.602</b>
27.522	1R,3Z,9S-2,6,10,10-Tetramethylbicyclo[7.2.0]undeca-2,6-diene	0.065
28.057	Citronellyl propanoate	0.309
28.307	alpha-Caryophyllene	0.21
28.996	alpha-Cetone	0.606
29.987	Antioxidant DBPC	0.527
30.306	alpha-N-Methyl ionone	0.204
30.691	Lilial	0.711
30.746	Lilial	0.878
31.058	cis-alpha-Bisabolene	0.207
31.597	Geraniol butyrate	0.333
32.181	Caryophyllene oxide	0.144
32.438	Phenyl ethyl tiglate	0.264
34.305	Citronellyl tiglate	0.097
34.584	Citronellol acetate	0.405
35.56	Geranyl tiglate	0.629
36.884	alpha-Hexylcinnamaldehyde	0.859
37.599	Benzyl Benzoate	2.328
38.208	Naphthalene, 6,7-diethyl-1,2,3,4-tetrahydro-1,1,4,4-tetramethyl-	0.169
38.282	Naphthalene, 6,7-diethyl-1,2,3,4-tetrahydro-1,1,4,4-tetramethyl-	0.066
39.302	Galaxolide	3.26
39.503	Versalide	0.955
39.848	Galaxolide	0.097
40.116	Methyl benzyl sulfone	0.594
40.366	Galaxolide	0.058
40.663	Galaxolide	0.124

Findings/Summary : **No adulterant, contaminant or diluent were detected using GC-MS**

	INB/SERV/0001	Issue: 2	Effective date: 15.07.2020
	<b>GC-MS TEST REPORT</b>		
	<b>Lab Ref. No: UKM-INBIO-2021-NA-0098</b>		

**Analyzed by**



**Syahmi Afiq Bin Mustaza**  
**Operator in Charge**  
 Assistant Science Officer  
 Institute of Systems Biology  
 Universiti Kebangsaan Malaysia

**Verified by**



**DR. KAMALRUL AZLAN AZIZAN**  
 Felo Penyelidik  
 Institut Biologi Sistem (INBIOSIS)  
 Universiti Kebangsaan Malaysia  
 LMIC (L/2006/6766/14)

**Kamalrul Azlan Azizan**  
**Technical Manager**